



# ChatGPT at Tilburg University

Fostering knowledge, skills, and character

# Rapid changes

**November 2022:** ChatGPT made available to the general public

**March 2023:** working group LLMs/GenAI (aka working group ChatGPT) is installed

Advice by the working group

**May 2023**

**November 2023**

Rules and regulations on assessment

Ensure that students and staff become AI-literate

Detection of unauthorized use of LLMs in assessment

Provide the infrastructure and ensure academic integrity as well as data privacy

Prevention of unauthorized use of LLMs in assessment

Implement policies and regulations for GenAI in education

Possibilities of incorporating LLMs in academic education

Build an AI-focused network and take a leading role

Organize support for lecturers

# I am no AI expert (like most of us)

DIGITAL  
SCIENCES  
FOR  
SOCIETY



Diversity  
expertise  
opinions

Asymmetry  
students - staff  
institutions

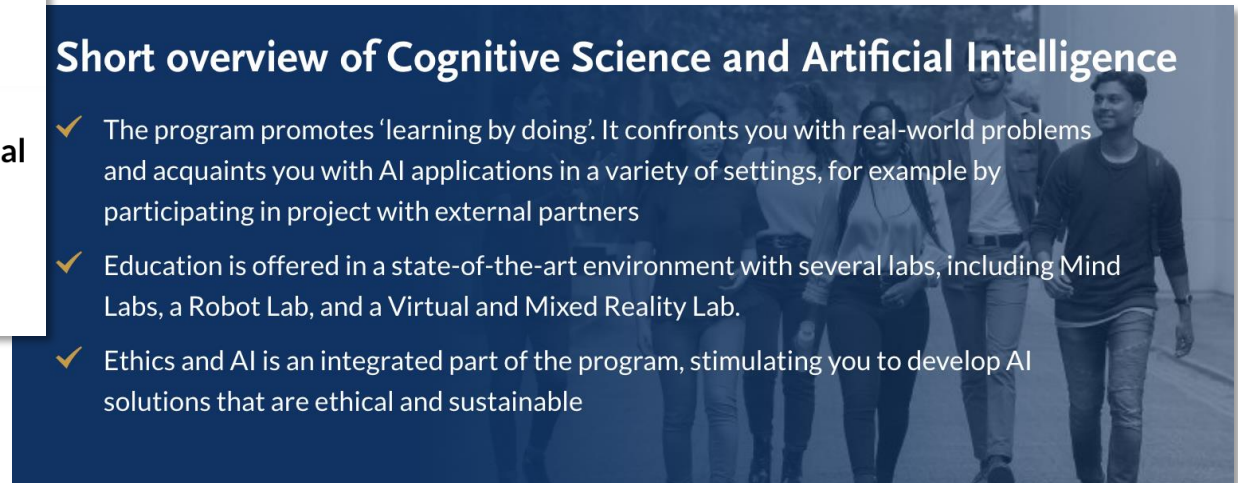
## Tilburg Institute for Law, Technology, and Society (TILT)

TILT is one of the leading research groups in Europe at the intersection of law, technology, and society. It is premised on the multidisciplinary study of socio-technical change, aiming at understanding the interaction of technology and social and normative practices, in order to clarify how regulatory challenges of socio-technical change can be addressed.



## Short overview of Cognitive Science and Artificial Intelligence

- ✓ The program promotes 'learning by doing'. It confronts you with real-world problems and acquaints you with AI applications in a variety of settings, for example by participating in project with external partners
- ✓ Education is offered in a state-of-the-art environment with several labs, including Mind Labs, a Robot Lab, and a Virtual and Mixed Reality Lab.
- ✓ Ethics and AI is an integrated part of the program, stimulating you to develop AI solutions that are ethical and sustainable



# Assessment

Fraud, plagiarism or just a calculator?  
Validity threat to unsupervised tests  
No proper detection

## AI Writing

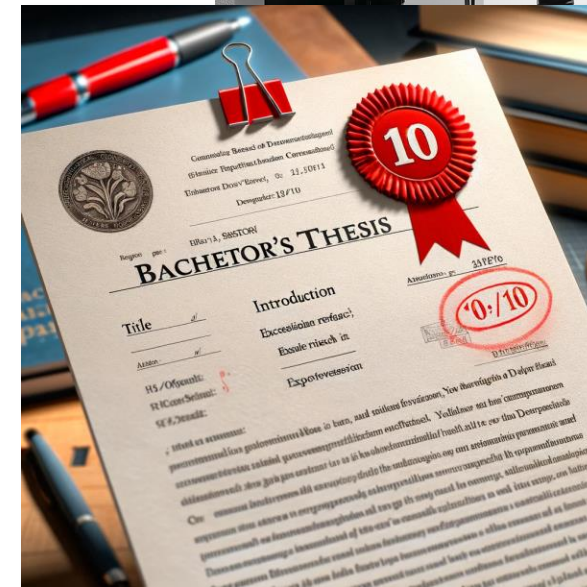


How much of this submission has been generated by AI? ⓘ

**\*12%**

of qualifying text in this submission has been determined to be generated by AI.

\* Low scores have a higher likelihood of false positives.



# Dealing with assessment

Regulate  
More testing on campus  
From summative to formative  
Change programs' intended  
learning outcomes



KU LEUVEN

Student aan KU Leuven

Schrijf je in Je opleiding Examen en masterproef Diploma's en attestaten Onderwijs- en Examenreglement Visie en beleid

Home > Onderwijstools > Verantwoord gebruik van Generatieve Artificiële Intelligentie

## Verantwoord gebruik van Generatieve Artificiële Intelligentie

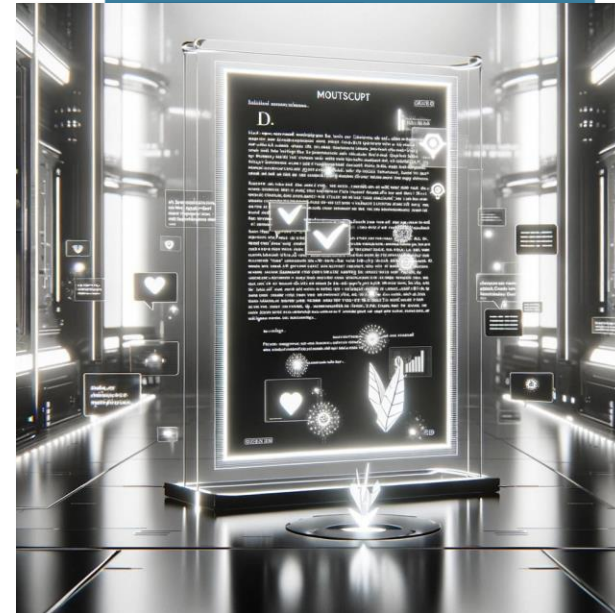
Richtlijnen voor studenten

Mag GenAI gebruikt worden aan de universiteit?

KU Leuven kiest ervoor om op termijn **Generatieve Artificiële Intelligentie (GenAI) verantwoord in te zetten**. GenAI tools hebben immers hun weg gevonden naar het werkveld waar je als alumnus terecht zal komen. Het is belangrijk dat je als student begrijpt hoe GenAI werkt zodat je de academische standaarden kan handhaven en eigenaarschap kan behouden over de geschreven tekst.

Snel naar

- > [Voor je begint...](#)
- > [Hoe kan je GenAI gebruiken?](#)
- > [Hoe zorg je voor transparantie?](#)
- > [Detectie van GenAI](#)
- > [Nuttige links](#)



# Ethics

Hallucinations (no function for truth)

Biases (from training set)

Privacy

Intellectual Property

Environmental Impact

Human exploitation

Dependency on corporations


## OpenAI, Microsoft hit with new author copyright lawsuit over AI training

By Blake Brittain

November 22, 2023 12:46 AM GMT+1 · Updated 13 days ago



### Is ChatGPT biased?

 Written by OpenAI  
Updated over a week ago

- ChatGPT is not free from biases and stereotypes, so users and educators should carefully review its content. It is important to critically assess any content that could teach or reinforce biases or stereotypes. Bias mitigation is an ongoing area of research for us, and we welcome feedback on how to improve.

**“So-called AI systems are fueled by millions of underpaid workers around the world, performing repetitive tasks under precarious labor conditions.”**

# Dealing with ethics

Ban  
Buy  
Develop

Antal van den Bosch in Trouw

Mogelijk verbod op AI voor ambtenaren: “Je weet niet wat er met die data gebeurt”



**TNO** innovation  
for life

Large language models such as ChatGPT offer promising technical opportunities to address societal challenges. At the same time, there are concerns about the legal and ethical aspects of this development, as most of the models are developed by foreign big tech. TNO is therefore working with SURF and NFI to develop its own Dutch language model. GPT-NL should strengthen our strategic autonomy in – and knowledge of – AI, Data Science, and Data Spaces.

## ***ChatGPT Is Banned in Italy Over Privacy Concerns*** **The New York Times**

The action by Italy's data protection agency is the first known instance of the chatbot's being blocked by a government order.

# Learning

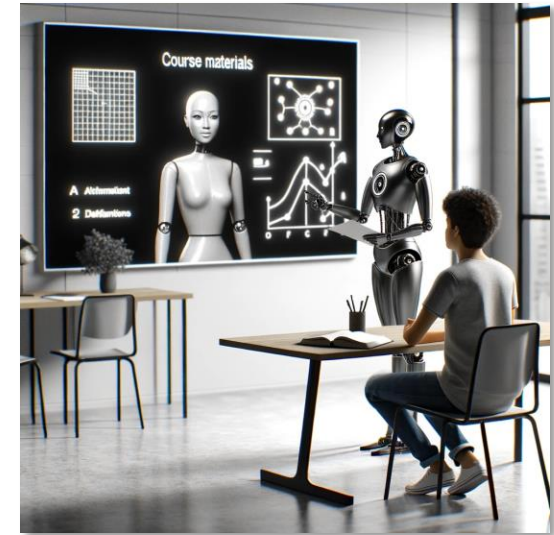
AI replacing learning  
Digital dependency  
Threat to critical thinking



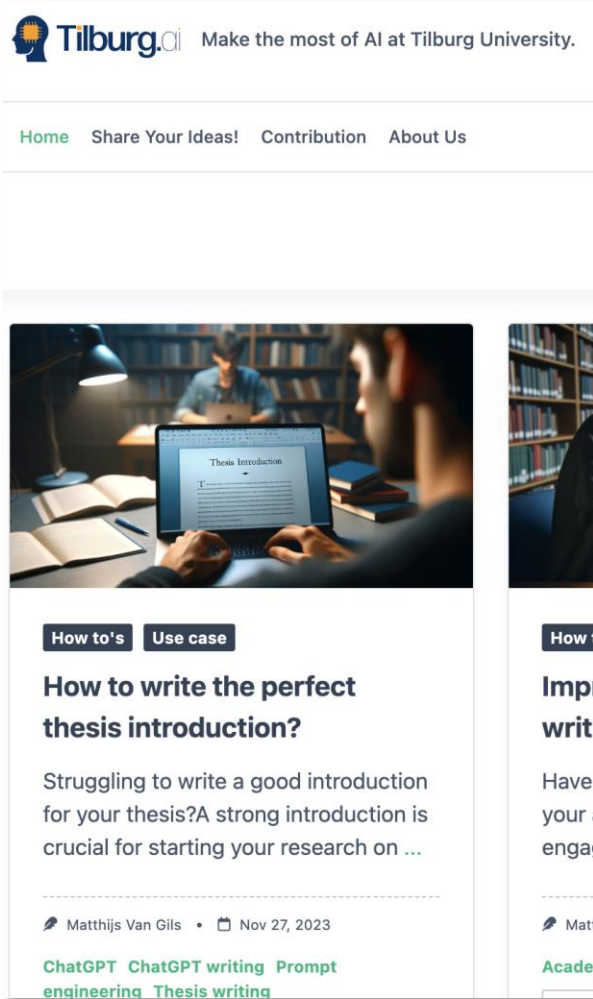
AI-enhanced learning  
Digital savviness  
Developing critical thinking



Brainstorming  
Feedback  
Quality of texts  
Explaining materials

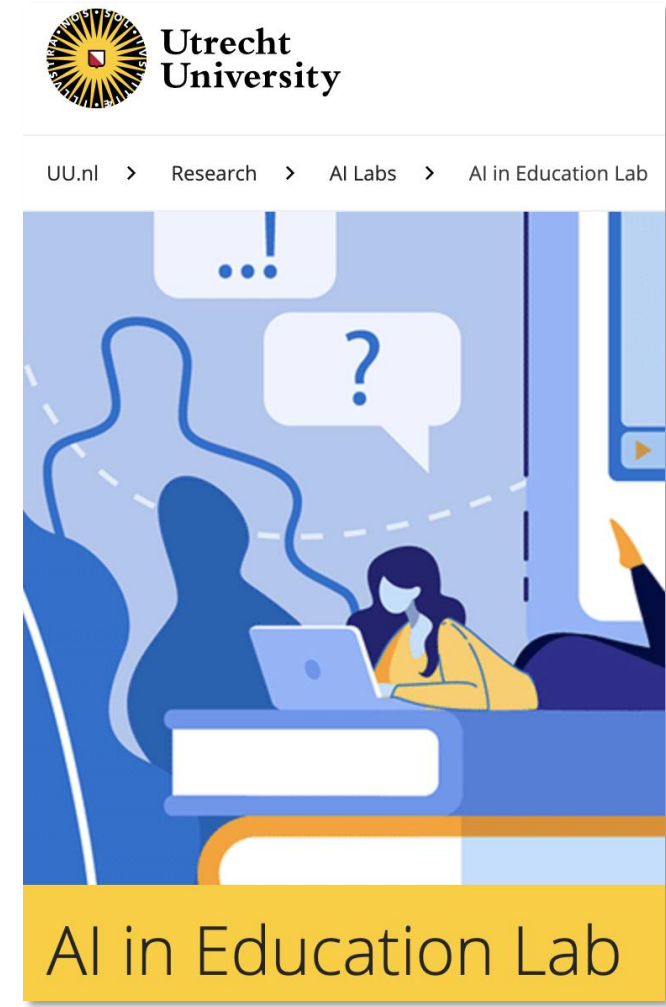


# Many initiatives and bundling of expertise



## Welcome to this e-module on Generative Artificial Intelligence (GenAI)!

This e-module is aimed at students who want to learn more about the responsible use of ChatGPT and GenAI in education. The current UvA policy states that study programmes may not (yet) allow tools such as ChatGPT to be actively used by students and lecturers for teaching and assessment purposes. Nonetheless, it is good to educate yourself on how ChatGPT and GenAI work and how it *can* be used responsibly in education.



# GenAI in the Tilburg Education Profile



## Knowledge

## Skills

## Character

AI Literacy

What is GenAI?  
How does it work?

Effective prompt usage  
Assessing answer value

Social/Ecological Footprint  
No function for truth

AI for Learning

What is learning?  
How does GenAI learn?

Brainstorming and writing  
Self-testing and feedback

Plagiarism and Ethics  
AI dependency  
Learning mindset

AI for Research

The sources of GenAI  
References and text

Formulating research  
questions  
Programming and writing

Academic standards  
(transparency, reproducibility)  
Responsibility and Ethics

AI for Work

Applications of GenAI  
Types of products

Generating text and  
presentations  
Corporate AI

Privacy and GDPR  
Social responsibility

# Additional issues that require attention

Improve AI-savviness and skills of teaching staff

Using GenAI for (better/more efficient?) education

The impact of GenAI on university organization and operations

How to be prepared for an ever-changing future?

What should universities teach in a world with GenAI?





Thank you